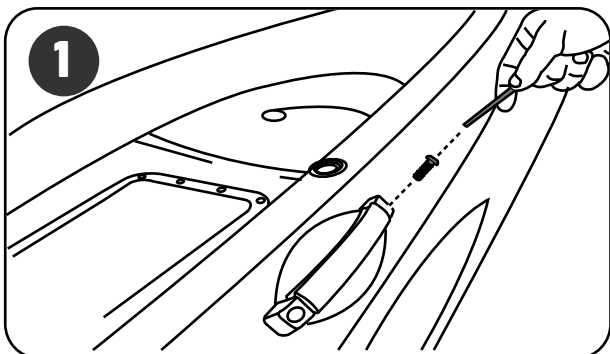


SIDE BUNGEE HANDLE INSTALLATION



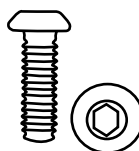
Use 5/32 allen wrench to screw in the BHC screw.

Bungee sold separately.

12" Bungee



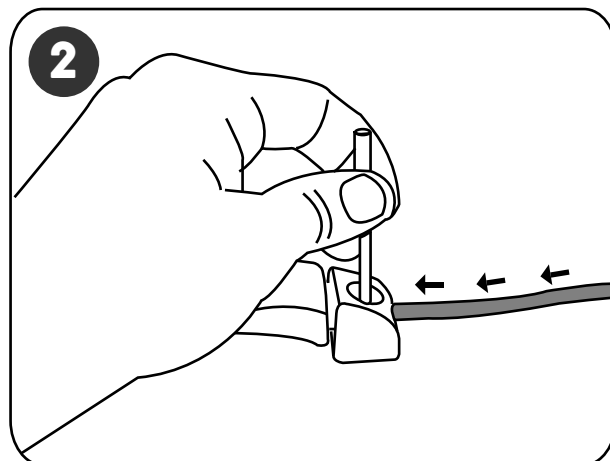
You will need the following tools.



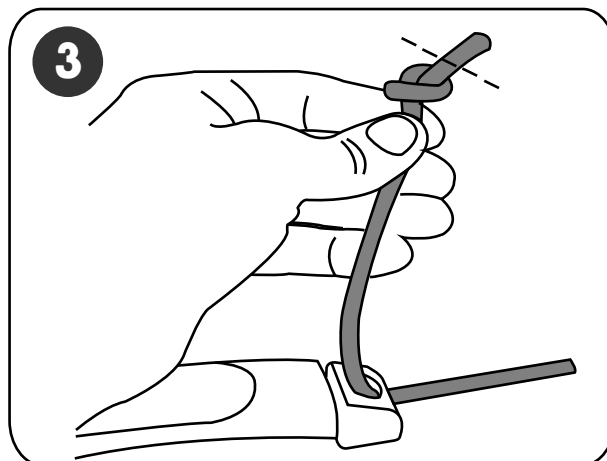
1/4-20X31/4 BHC



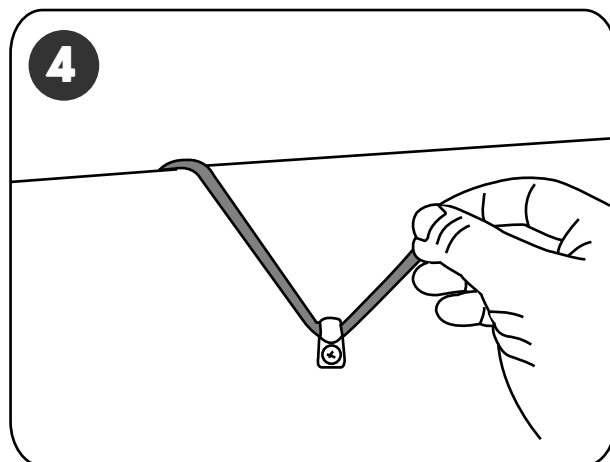
5/32 Allen Wrench



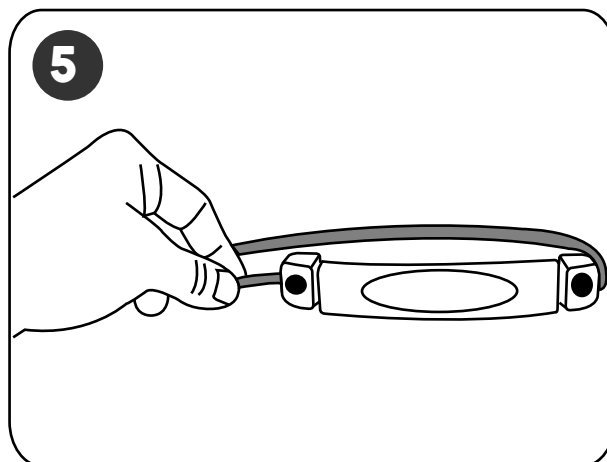
Thread the bungee into side of the handle. Use a long skinny tool to help guide bungee through the top hole.



Knot the end of the bungee; cut the excess bungee; carefully melt the end to prevent fraying.



Wrap the bungee around the nylon hook to confirm the desired length.



Repeat process on opposite side of handle.