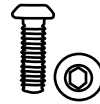


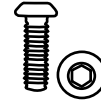
TRANSITION SEAT ADAPTOR TRAY TO X-SEAT



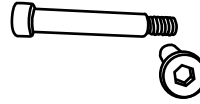
You will need the following hardware.



1/4-20X3 1/4" BHC



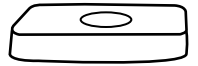
1/4-20X5/8" PPH



1/4-20X5/16X1 1/2" Shoulder Screen

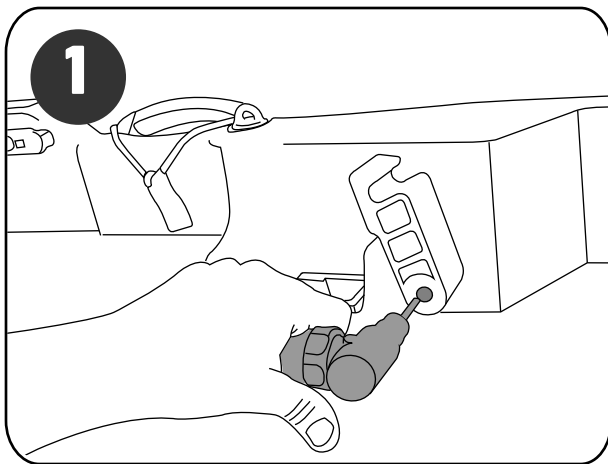


1/4-20 Nylon Lock Nut

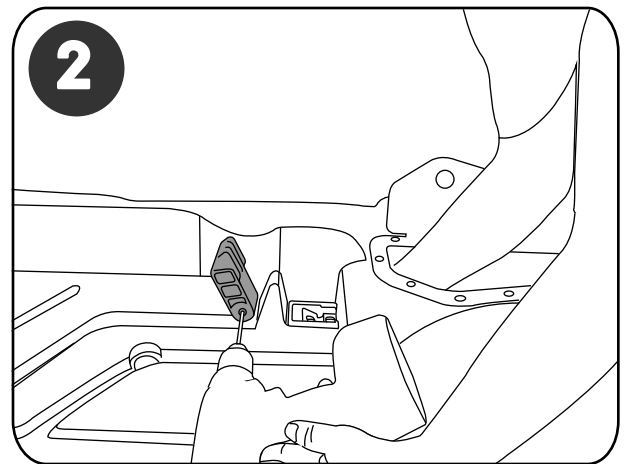


Square Washer

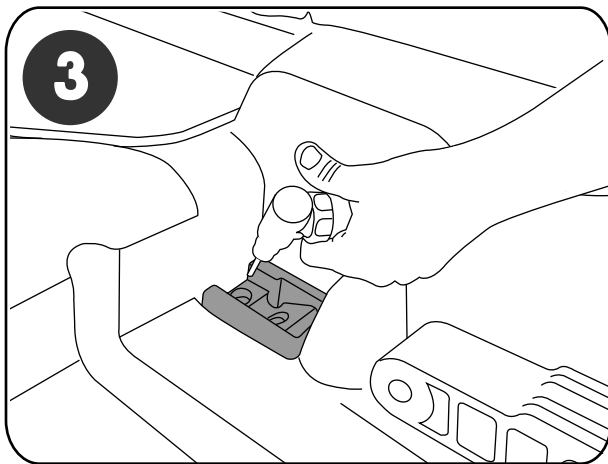
X-Seat Installation



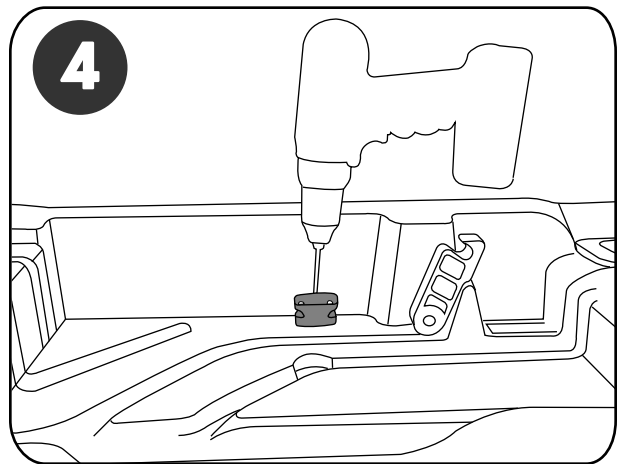
Use kick stands and front leg mounts as guides to drill holes into kayak's hull. Kick stand must be flush to plastic.



Insert screws and secure washers to screw backs by reaching into kayak's hull and securing the washer to the screw.



Screw the front leg chair mounts into the kayak.



Secure the buckle to the kayak by screwing the washer into the fittings.

